

catherine weitzman  
handmade jewelry designs  
2015 catalog

catherine weitzman  
handmade jewelry designs

**HANDMADE ELEGANCE**

cast in sterling silver and 18k gold vermeil from natural and nature inspired objects. combinations of semi-precious gemstones. layer it all together, customize your stones and colors.



• = bestseller

catherine weitzman  
handmade jewelry designs

**BRANCHES LEAVES AND SHAKERS**

cast in sterling silver and 18k gold vermeil from organic branches found in the forest. 2 sided glass chamber necklaces, earrings, bracelets and rings can be filled with white crystal, aqua, ruby, peridot, turquoise, champagne, black, green, coffee, garnet or amethyst color. select chambers can also be filled with white topaz or blue topaz briolettes. rings come in whole sizes 5-8.



bestseller

**RUBY GEMS**

A mix of varying shades of ruby combined with gold vermeil to create subtle elegance in all forms.



N993V  
N993S  
(white crystal/  
ruby)



N1061V  
N1061S  
(white crystal/  
ruby)



N1053V  
N1053S  
(ruby)



new!  
N1243V  
N1243S  
(ruby)



N871V  
N871S  
(butterfly wing)



N870V  
N870S  
(butterfly wing)



N322V  
N322S  
N577V  
N577S  
(bird/ruby)



new!  
N1244V  
N1244S  
(ruby)  
N837V  
N837S  
(ruby)



(32")  
N1119V  
N1119S  
(ruby)



new!  
E969V  
E969S  
(ruby)



new!  
E970V  
E970S  
(ruby)



new!  
E971V  
E971S  
(ruby)



E364V  
E364S



E972V  
E972S  
new!  
(ruby)



E973V  
E973S  
new!  
(ruby)



E974V  
E974S  
new!  
(ruby)



E876V  
E876S  
(ruby)



new!  
E975V  
E975S  
(ruby)



new!  
E976V  
E976S  
(ruby)



new!  
E977V  
E977S  
(ruby)



new!  
E978V  
E978S  
(ruby)



new!  
E979V  
E979S  
(ruby)



new!  
E980V  
E980S  
(ruby)



R194V  
R194S  
(ruby)



B121V  
B121S  
(ruby)



B287V  
B287S  
(ruby)



B346V  
B346S  
(ruby)



B250V  
B250S  
(ruby)



new!  
B387V  
B387S  
(ruby)




new!  
B383V  
B383S  
(ruby)

= bestseller

**GREEN GEMS**

A mix of green garnet, apatite, opal, and kyanite combined with gold vermeil to create subtle elegance in all forms.




 = bestseller

**Blue Gems**

A mix of sapphire, blue topaz, and iolite combined with gold vermeil to create subtle elegance in all forms.



 = bestseller

**CRYSTAL GEMS**

A mix of white topaz, and white mystic topaz combined with gold vermeil to create subtle elegance in all forms



= bestseller

**ROSE GOLD**

All of your favorite styles are now available in vermeil rose gold! For items not listed, please contact us for pricing.



new!  
N911RG  
(white crystal)



new!  
N911RG  
(champagne)

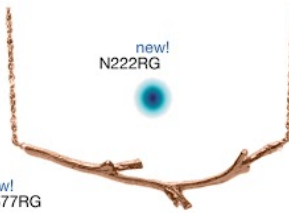


new!  
N911RG  
(coffee)



new!  
N438RG

new!  
N577RG  
(starfish/  
white  
topaz)



new!  
N222RG



new!  
N870RG

(white crystal)



new!  
N871RG

(white crystal)



new!  
N304RG



new!  
N119RG



new!  
16" N1249RG  
24" N1250RG  
32" N1251RG  
(white mystic  
topaz)



new!  
16" N928RG  
24" N929RG  
32" N930RG  
(labradorite)



new!  
16" N1252RG  
24" N1253RG  
32" N1254RG  
(pink tourmaline)



new!  
N921RG  
(white  
topaz)



new!  
N1109RG  
(white  
topaz)



new!  
N1108RG  
(24")  
(aqua)



new!  
N1111RG  
(aqua)



new!  
E897RG  
(white  
crystal)



(aqua)



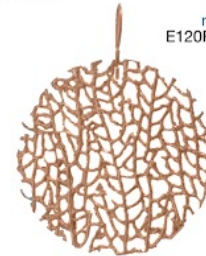
new!  
E638RG  
(white  
crystal)



new!  
E683RG  
(white  
crystal)



new!  
E683RG  
(aqua)



new!  
E120RG



new!  
E237RG



new!  
R199RG  
(white crystal)



new!  
R183RG



new!  
B153MRG  
(set of 3)



new!  
B391RG  
(white mystic  
topaz)



new!  
B264RG  
(labradorite)




new!  
B395RG  
(pink tourmaline)



new!  
B109RG

new!  
B110RG

 = bestseller



**MENAGERIE OF NATURAL WONDERS**

cast in sterling silver and 18k gold vermeil from organic inspired objects. tubes can be filled with crystals, feather, butterfly wings, sand, shells, beach glass and mini terrariums and aquariums. accent stones include ruby, sapphire, and crystal.



= bestseller

**CLUSTER CHAINS**

gold plated hand wrapped chains of turquoise, black spinel, lapis, chalcedony and labradorite are combined with silver and vermeil chains to create rich clusters for bracelets, necklaces and earrings.



**CLUSTER CHAINS WITH CHARMS**

gold plated hand wrapped chains of turquoise, black spinel, lapis, chalcedony and labradorite are combined with silver and vermeil chains and charms to create rich clusters for bracelets, necklaces and earrings.



new!  
(32")  
N1114MS  
  
(white)



(20")  
N1117MV  
  
(black spinel)



(20")  
N1258V  
  
(labradorite)



(20")  
N1117MV  
  
(turquoise)



new!  
N1248MV  
  
(mystic)



N1221V  
  
(lapis lazuli)



N1225V  
  
(aquamarine)



(white)

new!  
E988MV

E988MS

(labradorite)

new!  
E988MV

E988MS

(mystic)



(white)

new!  
E989MS



(black spinel)

new!  
E989MV



(mystic)



E964V

(aquamarine)



E963V

(turquoise)



new!  
B396V

(black spinel)



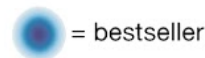
new!  
B396V

(mystic)



B378V

(aquamarine)



= bestseller

**AQUAMARINE AND TOURMALINE BEADS**

semi-precious aquamarine and watermelon tourmaline beads are strung and wire wrapped together to create beautifully subtle combinations of necklaces, bracelets and earrings.



N1182V  
N1182S  
24"  
(watermelon  
tourmaline)



N1181V  
N1181S  
32"  
(watermelon  
tourmaline)



N1185V  
N1185S  
24"  
(watermelon  
tourmaline)



N1233V  
N1233S  
32"  
(aquamarine  
heishi)



(16")  
N985V  
N985S  
24"  
N984V - \$80  
N984S - \$72  
(aquamarine  
heishi)



N1210V  
N1210S  
24"  
(aquamarine  
heishi)



E958V  
E958S  
(watermelon  
tourmaline)



E962V  
E962S  
(watermelon  
tourmaline)



E946V  
E946S  
(amethyst)



E959V  
E959S  
(aquamarine  
heishi)



E866V  
E866S  
(aquamarine)



E365V  
E365S  
(aquamarine)



E960V  
E960S  
(aquamarine  
heishi)



B350V  
B350S  
(watermelon  
tourmaline)




B352V  
B352S  
(watermelon  
tourmaline)



B382V  
B382S



B367V  
B367S  
(aquamarine  
heishi)

 = bestseller

**LITTLE PRECIOUS / SEMI-PRECIOUS GEMSTONES ON CHAIN**

long/short necklaces, bracelets and earrings available in a wide variety of little rondelle gemstones combined with 18k gold vermeil and sterling silver chains and beads.

N837 is 16" long with a 2" extension and four inches of the chosen stone color



= bestseller

**HANDWOVEN TASSELS**

Handwoven cotton thread: cute, stylish, happy! Also silver & 18k vermeil gold beads (many beads available), gold fill chain 24" long.



N1177V  
N1177S

N1177V  
N1177S

N1177V  
N1177S



N1240V  
N1240S

N1240V  
N1240S

N1240V  
N1240S

N1240V  
N1240S



N1241V  
N1241S



E943V  
E943S



E948V  
E948S

E948V  
E948S

E948V  
E948S

E948V  
E948S

E948V  
E948S



E945V  
E945S



B384MV



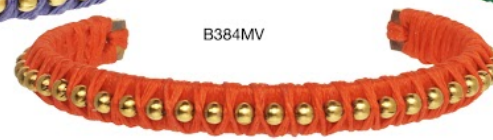
B384MV



B384MV



B384MV



B384MV



B349V  
B349S



new!  
B392V  
B392S



new!  
B392V  
B392S



B349V  
B349S

**STARFISH**

cast from actual starfish in sterling silver and 18k gold vermeil. stone accents available in a wide variety of colors including aquamarine, turquoise and keishi pearl.



= bestseller

catherine weitzman  
handmade jewelry designs

**SEASIDE**

sterling silver and 18k gold vermeil castings inspired and collected by the sea. Stone accents available in a variety of colors including white and blue topaz, chalcedony, ruby and sapphire.



• = bestseller



catherine weitzman  
handmade jewelry designs

**SEASIDE**

sterling silver and 18k gold vermeil castings inspired and collected by the sea. Stone accents available in a variety of colors including white and blue topaz, chalcedony, ruby and sapphire.




= bestseller

**BEZELED CRYSTAL**

bezeled crystals set in sterling silver and 18k vermeil and accented with a large assortment of semi-precious rondelles. choose from clear crystal, turquoise, deep blue, light blue, peridot and chalcedony. accent stones include gold vermeil, aquamarine, ruby, sapphire, black spinel and quartz.



 = bestseller

catherine weitzman  
handmade jewelry designs

**CORAL**

cast in 18k gold vermeil and sterling silver from fan coral washed up on the beaches of hawaii. stone accents available in a wide variety of colors. basket fillings include ruby, sapphire, turquoise and glass. 18k solid gold prices available upon request.



= bestseller

**PRECIOUS/SEMI-PRECIOUS STONE LAYERS**

an array of rich and colorful stones on individual strands, combined with sterling silver and 18k vermeil beads.  
available in 16, 24, and 32 inch necklace lengths and bracelets.



new!  
16" N1249V  
24" N1250V  
32" N1251V

(white mystic topaz)



16" N175V  
24" N250V  
32" N290V

(ruby)



16" N300S  
24" N265S  
32" N292S

(aquamarine)



16" N417S  
24" N418S  
32" N427S

(sapphire)



new!  
16" N1255V  
24" N1256V  
32" N1257V

(green garnet)



16" N521V  
24" N522V  
32" N528V

(turquoise)



B130V  
B130S  
(aquamarine)



B216V  
B216S  
(aquamarine)



B216V  
B216S  
(sapphire)



(20" wrap)  
B217V  
B217S  
(sapphire)



(20" wrap)  
B217V  
B217S  
(ruby)



B121V  
B121S  
(ruby)



B145V  
B145S  
(sapphire)



(20" wrap)  
B217V  
B217S  
(turquoise)



B250V  
B250S  
(aquamarine)



B160V  
B160S  
(turquoise)



B391V  
B391S  
new!  
(white mystic topaz)



B216V  
(ruby)



B250V  
B250S  
(sapphire)



B250V  
B250S  
(ruby)

= bestseller

**NATURAL BEAD, GEMSTONE LAYERS**

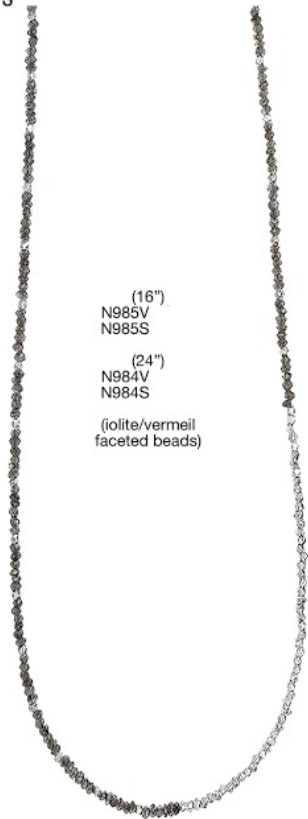
precious and semi-precious stones combine to make natural necklaces and bracelets for layering.



(16")  
N985V  
N985S

(24")  
N984V  
N984S

(mystic/vermeil  
faceted beads)



(16")  
N985V  
N985S

(24")  
N984V  
N984S

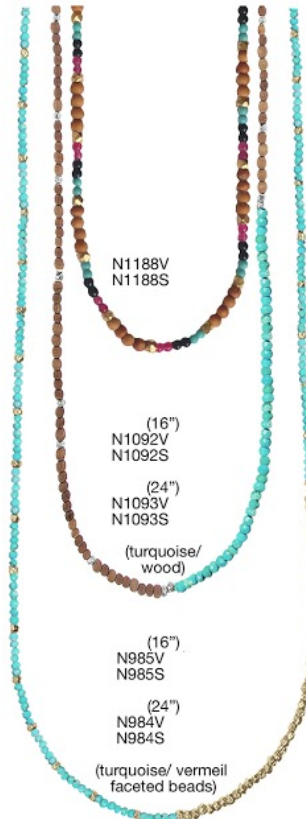
(iolite/vermeil  
faceted beads)



(16")  
N985V  
N985S

(24")  
N984V  
N984S

*new!*  
(white mystic topaz/  
vermeil faceted beads)



N1188V  
N1188S

(16")  
N1092V  
N1092S

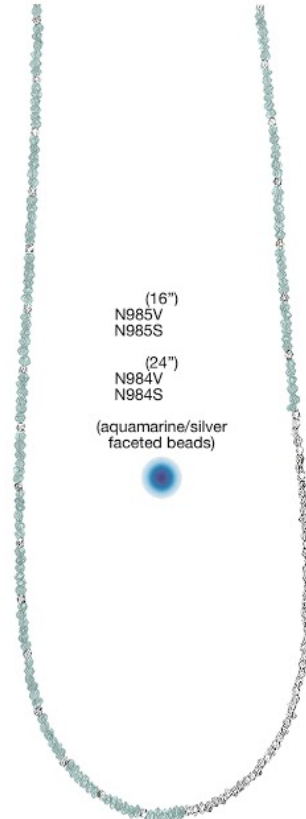
(24")  
N1093V  
N1093S

(turquoise/  
wood)

(16")  
N985V  
N985S

(24")  
N984V  
N984S

(turquoise/ vermeil  
faceted beads)



(16")  
N985V  
N985S

(24")  
N984V  
N984S

(aquamarine/silver  
faceted beads)



(32")  
N1094V  
N1094S

(wood & lapis lazuli/  
vermeil faceted beads)

(wood & turquoise/  
vermeil faceted  
beads)



B346V  
B346S

(ruby)



B284V  
B284S

*new!*  
(green garnet)



B284V  
B284S

*new!*  
(white mystic topaz)



B284V  
B284S

(turquoise)



B346V  
B346S

(sapphire)



B284V  
B284S

(mystic)




B284V  
B284S

(labradorite)



B315V  
B315S


(turquoise/wood)

 = bestseller

**HAMMERED BEADS AND SIMPLE STONES**

sterling silver and 18k vermeil hammered beads are combined with a wide variety of stones. simple stone necklaces display semi-precious gemstones in a variety of unique cuts, on 18k vermeil and sterling silver chain.



 = bestseller

**SOLITAIRES AND GEMSTONES ON CHAIN**

a collection of semi-precious gemstone solitaires in various shapes and sizes set in 18k vermeil and sterling silver. long/short necklaces, bracelets and earrings available in a wide variety of little rondelle gemstones combined with 18k gold vermeil and sterling silver chains and beads.

N921V N921S  (white topaz)	 (peridot)	 (swiss blue topaz)	 (amethyst) <small>new!</small>	 (garnet)	 (black spinel)	 <small>new! (18") N1118V N1118S (ruby)</small>	 <small>new! (18") N1118V N1118S (turquoise)</small>	 <small>new! (32") N1119V N1119S (ruby)</small>	 <small>new! (32") N1119V N1119S (turquoise)</small>
N1050V N1050S  (white topaz)	<small>new! N1158V N1158S \$56.</small>  (white topaz)	N1054V N1054S  (white topaz)	 (swiss blue topaz)	N1109V  (amethyst)	<small>new! N1109S</small>  (white topaz)				
E690V E690S  (white topaz)	 (pink topaz)	 (peridot)	 (swiss blue topaz)						
E691V E691S  (white topaz)	 (peridot)	 (swiss blue topaz)	 (amethyst) <small>new!</small>	 (sapphire) <small>new! E882V E882S</small>	 (aqua) <small>new! E882V E882S</small>	 (turquoise)			
E841V E841S  (white topaz)	 (swiss blue topaz)	E883V <small>new! E883S</small>  (peridot)	 (amethyst)	 (white topaz) E809V E809S	 (white topaz) <small>new! E883V E883S</small>				
 B316V B316S (white topaz)	 <small>new! B383V B383S (ruby)</small>	 <small>new! B383V B383S (green garnet)</small>	 <small>new! B383V B383S (sapphire)</small>						

= bestseller


# catherine weitzman

handmade jewelry designs

## GEMSTONE CLUSTERS AND DROPS

precious and semi-precious beads individually hand wrapped to create cascading drops of colorful stone, accented by organic pods of 18k vermeil and sterling silver.




 = bestseller



**LITTLE GEMSTONE DROPS**

Precious and semi-precious beads individually hand wrapped along 16" and 24" lengths of gold fill and sterling silver chain.



 = bestseller

**FACETED GEMSTONES (BIG AND SMALL)**

a wide variety of stones and colors available in this new chunky rondelle size: stones include aquamarine, ruby, sapphire, emerald, lapis lazuli, black spinel, apatite, labradorite, rutilated quartz, tourmalinated quartz, sterling silver and 18k gold vermeil.



= bestseller

**COINS**

silver and gold plated handmade coin beads are mixed with rutilated quartz, labradorite, aquamarine, kyanite to create earrings, bracelets and necklaces.



N1142MV  
N1142MS  
(rutilated quartz)  
32"



N1112MV  
N1112MS  
(labradorite)  
20"



N1112MV  
N1112MS  
(aquamarine)  
20"



N1112MV  
N1112MS  
(kyanite)  
20"



N1143MV  
N1143MS  
new!  
(peridot)  
18"



new!  
N1168MV  
N1168MS  
(aquamarine/  
kyanite)  
18"



N1143MV  
N1143MS  
(aquamarine)  
18"



E901MV  
E901MS  
(rutilated quartz)



new!  
E901MV  
E901MS  
(peridot)



E901MV  
E901MS  
(labradorite)



(gold plate)



E916MV  
E916MS  
(silver plate)



E900MV  
E900MS  
(aquamarine)



E900MV  
E900MS  
new!  
(peridot)



E900MV  
E900MS  
(kyanite)



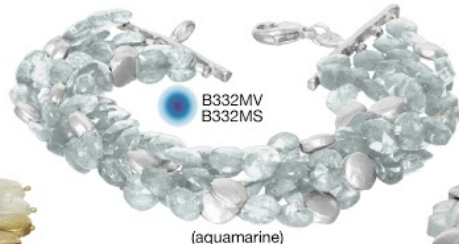
E900MV  
E900MS  
(rutilated quartz)



E900MV  
E900MS  
(labradorite)



B324MV  
B324MS  
(rutilated quartz)



B332MV  
B332MS  
(aquamarine)



B325MV  
B325MS  
(aquamarine)



B325MV  
B325MS  
(labradorite)

= bestseller

catherine weitzman  
handmade jewelry designs

**PLUMERIA**

cast in sterling silver and 18k gold vermeil from organic leaves, branches and seeds found in the forest. accent stones include rubies, sapphires and mystic.



● = bestseller

catherine weitzman  
handmade jewelry designs

**TREE OF LIFE**

18k gold vermeil and sterling silver castings from original natural sources. stone accents available in a wide variety of colors including ruby, sapphire, aquamarine and swiss blue topaz.



= bestseller

catherine weitzman  
handmade jewelry designs

**SEED PODS AND STRAWBERRY LEAVES**

cast in sterling silver and 18k gold vermeil from organic natural sources. a wide variety of stones / color accents including aquamarine, green amethyst, ruby, champagne mystic and sapphire are available. 18k solid gold pricing available upon request.



= bestseller

**FLOWER PETALS AND BIRDS**

delicate and organically textured 18k gold vermeil and sterling silver castings from flower petals in an array of sizes. birds available in different styles and sizes. stone accents available in a wide variety of colors.



● = bestseller

**FEATHERS**

sterling silver and 18k gold vermeil feather castings can be combined with a wide variety of stones including aquamarine, green amethyst, ruby, champagne mystic and sapphire.



= bestseller



# catherine weitzman

handmade jewelry designs

## PRESS

some examples of pieces featured in these recent publications



## COMPANY BIO

Catherine Weitzman – Born and raised in New York

1994 Classical metalsmith education in Italy

1995-2000 Travels with husband and co-creator, Scott Diamond: Thailand, Malaysia, Indonesia, Cambodia, Laos, Burma, India, Nepal, New Zealand, Micronesia, Japan, Honduras, Guatemala, Mexico, Spain, Morocco, Egypt. Apprentices with traditional artisans all over the world.

2000-2003 Returns to the United States to start Catherine Weitzman Handmade Jewelry in San Francisco, California. Stores begin to make the jewelry available. The work is well received and the company expands with each new collection.

2004-2005 Relocates handmade production studio to Honolulu, Hawaii.

2006-2007 Living between Hawaii and Manhattan generates a large body of work inspired by both islands.

2008-2009 Opens a showroom in mid-town Manhattan for sales and press requests.

2010-2013 Collection available in stores on five continents.

With each new piece of her signature line of handmade jewelry, Catherine Weitzman expresses her love of nature through art, design, and fashion. The work evolves from a lifetime of extensive travel by land and sea. Seasonal accessory collections offer women organic elegance that combines luxury and wearability with the highest standards of craftsmanship. Catherine and Scott live between New York and Hawaii, where a gifted production team manufactures all of their products by hand. While they derive tremendous pleasure from creating the jewelry, their greatest satisfaction comes from sharing it with each individual who sees it, wears it, and makes it her own.

## CURRENT INFLUENCES

The ecology of the 5 elements- earth, air, fire, water, space- provides a limitless source of inspiration. Much of our current work consists of precious metals cast directly from objects that we find in nature, like branches, shells, leaves, and flowers

